

# QUICK START FlushMinder® RF Wireless Dual Flush Kit Instructions

This general instruction sheet covers the basic installation procedure for this kit. Since toilet configurations vary widely, your particular installation may require additional steps and/or hardware. For more information, please visit our website at <https://water-saver.org> or email your questions to [support@water-saver.org](mailto:support@water-saver.org).



Water Saver Products, LLC

“Home of the FlushSaver DIY Kits”

◆◆◆ KFM-RFA-QS Rev B © WSP 2023 ◆◆◆

**Thank You for choosing Water Saver Products !!!**

## OVERVIEW

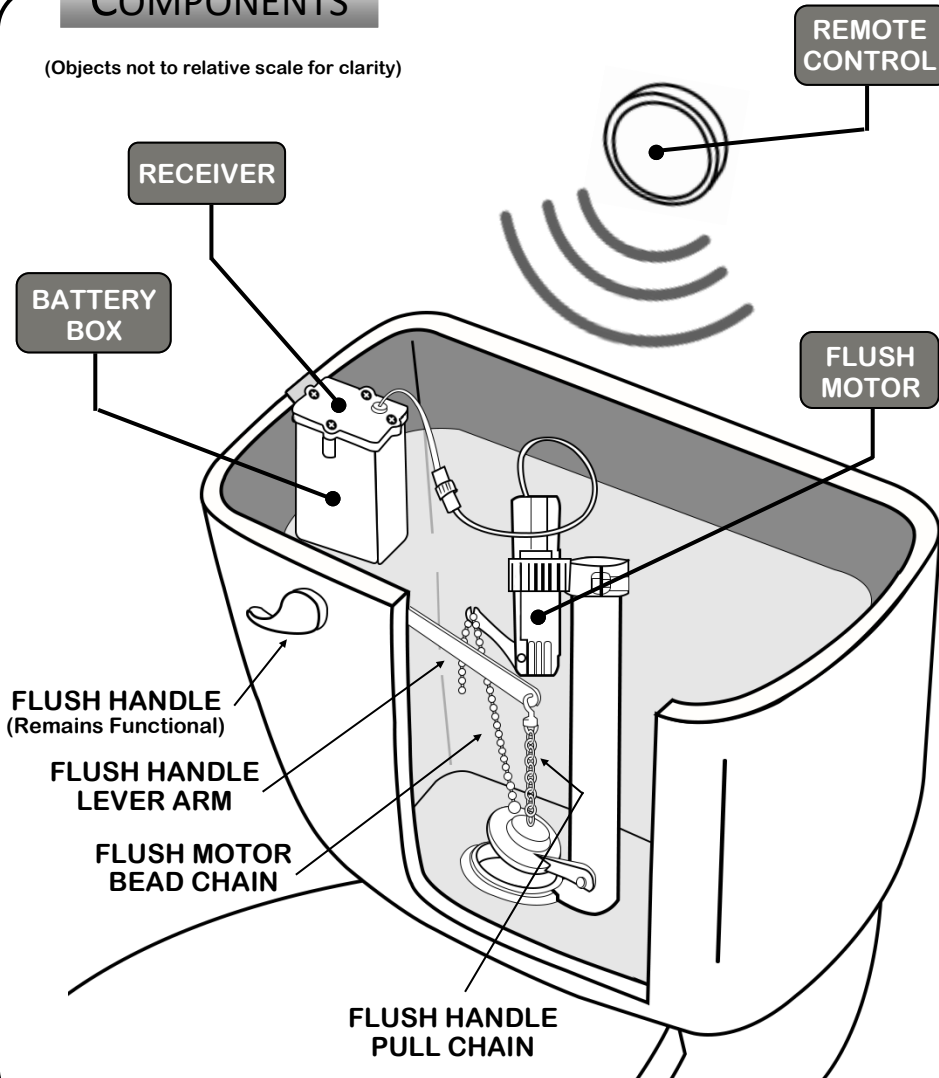
This electronic dual-flush toilet conversion system fits most standard Flush Handle toilets with a “flapper valve” and is activated by a WIRELESS REMOTE. Upon toilet use, a simple press of the button on the Remote Control activates a Flush Motor inside the tank which lifts the flapper valve for either a Half-Flush (#1) or Full-Flush (#2) as desired, depending on how long the button is pressed. The Remote Control has an average range of 15 feet and is linked to its Receiver to prevent interference from other wireless devices, allowing for various options in the mounting location. The Flush Motor and Receiver/Battery Box installations are quick and easy with NO TOOLS, NO TANK REMOVAL or plumbing skills required. Both the Flush Motor and Receiver/Battery Box are moisture sealed and run on standard batteries (included) for up to 6 months or 5,000 worry-free flushes. Saves water and improves sanitation - perfect for children, disabled adults, the elderly, public toilets or any high-use bathroom area where flushing delinquency is a problem.

## PREPARATION

Before attempting installation, PLEASE READ these Quick Start Instructions thoroughly and familiarize yourself with your specific toilet components down inside the tank. Ensure that the Receiver/Battery Box can be clipped to the inside edge of the toilet tank without obstructing the other components. Similarly, check that the Flush Motor will fit onto the filler tube down inside the toilet tank and directly above the flapper valve without interference. The single large button on the Remote Control can be hand or foot activated, so choose an appropriate location for easy access. Also note that the Remote Control uses radio signals and will transmit through walls and doors, but the range may be reduced, so some experimentation may be required to find the optimal mounting location.

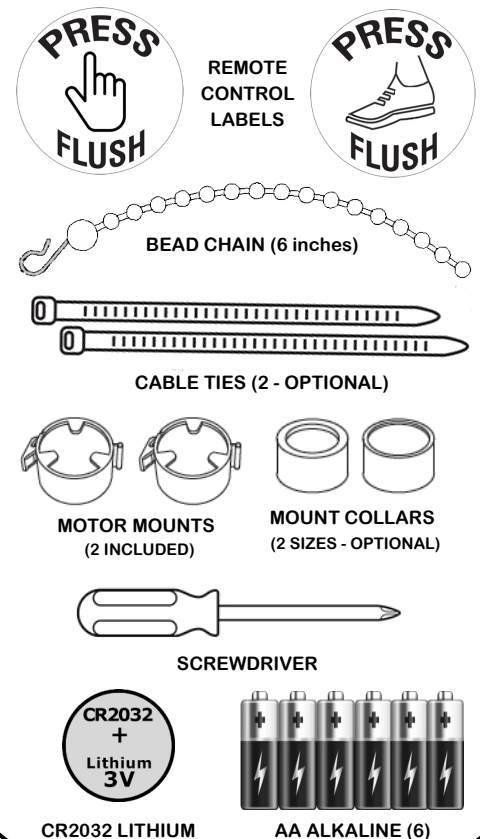
## COMPONENTS

(Objects not to relative scale for clarity)



## ACCESSORIES

(Objects not to relative scale for clarity)



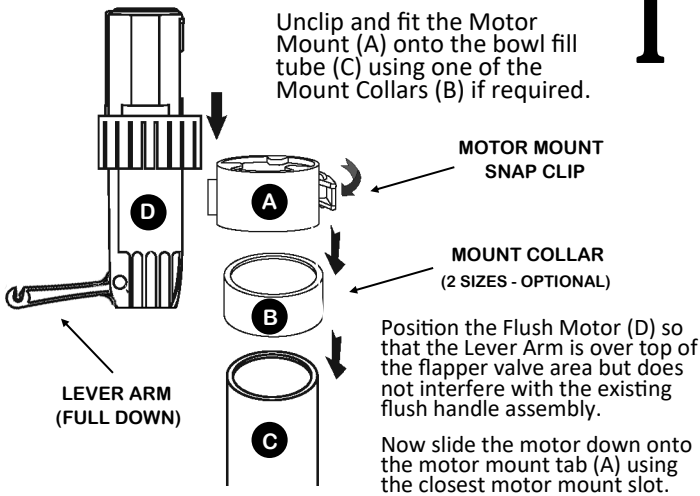
**INSTALLATION (over)**



## INSTALLATION

# 1

Unclip and fit the Motor Mount (A) onto the bowl fill tube (C) using one of the Mount Collars (B) if required.



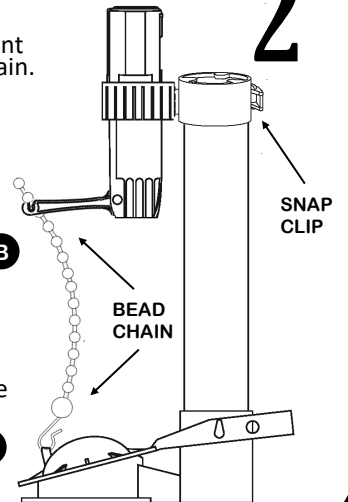
Clip the lower end of the Bead Chain to the top of the flapper valve (A) at the same attach point as the existing Lever Handle Chain.

# 2

Now snap the upper end of the Bead Chain into the lever arm groove (B), leaving a little slack in the chain.

Check the relative alignment of both lever arms and chains to ensure there is no interference, adjust as necessary, then secure the motor mount Snap Clip.

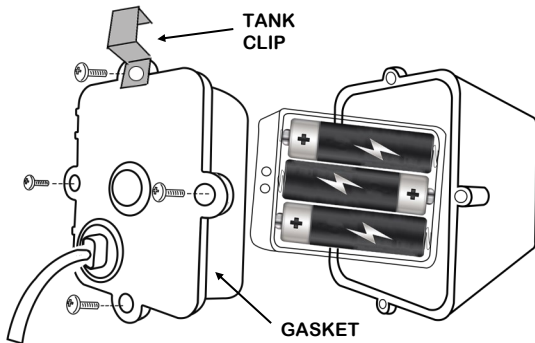
USE A CABLE TIE TO BETTER SECURE THE MOUNT IF REQUIRED



Remove the 4 screws from the Receiver/Battery Box cover and install 6 AA batteries. Be sure to orient the batteries correctly and check that the silicone gasket remains in position, then replace the screws with the Tank Clip at the desired location.

# 3

Tighten the screws just enough to slightly compress the gasket - DO NOT OVERTIGHTEN!

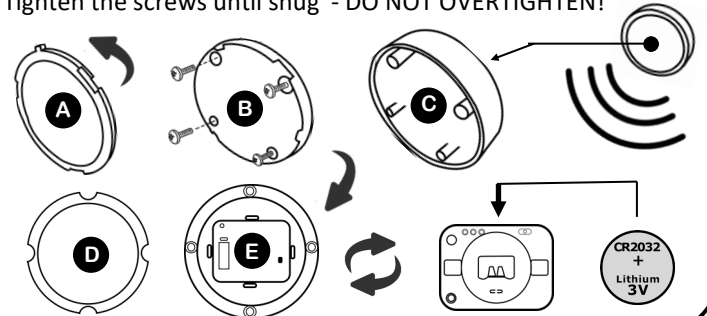


Locate the finger tab on the Back Cover (A) of the Remote Control and rotate it counter clockwise to release it. Then remove the 4 screws underneath to separate the Push Button (C) from the Inner Body (B).

# 4

Flip over the Inner Body and peel off the Silicone Cap (D), lift out the Circuit Board (E) and flip it over. Now slide the CR2032 battery into its holder with the (+) plus side up. Reassemble all components in reverse order.

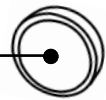
Tighten the screws until snug - DO NOT OVERTIGHTEN!



## OPERATION

# 5

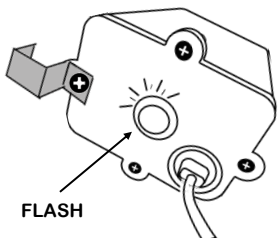
⇒ PRESS  
PRESS  
PRESS



Press the Remote Control button repeatedly until the Red LED on top of the Receiver lights up, indicating that the units are now linked.

Install the Receiver, connect the Flush Motor to the Receiver and screw on the connector collar to secure it.

Press and Release the Remote Control Button for a #1 Half Flush or Press and Hold the Button for 1 second or more and then Release for a #2 Full Flush.



PRESS HOLD  
1 SEC+  
RELEASE



## ADJUSTMENTS

# 6

The amount of water released during a flush can be increased or decreased by removing or adding slack in the Bead Chain and also by raising or lowering the water in the tank. Further, some Flapper Valves have multiple lifting points where the chains attach to allow for more or less lift height.

In order to conserve water when operating this system, the Flapper Valve should not fully "pop" open as when operated with the Lever Handle.

Once any adjustments have been completed, mount the Remote Control in the selected location and affix the appropriate Remote Control Label as desired.

**INSTALLATION AND SETUP COMPLETE!**

**NOTE:** The Remote Control battery should last longer than the Receiver/Flush Motor batteries, so anytime the Flush Motor becomes sluggish or fails to operate, change the batteries in the Receiver first and then the Remote Control.

## SPECIFICATIONS

Remote Control: 2.25 x 0.75 inches (57 x 19 mm)  
Radio Frequency: 2.4GHz Unlicensed Consumer Band  
Range: 15 feet Average Line of Sight (4.5 meters)  
Power: CR2032 3V Lithium Coin Cell

Half Flush Activate: Press - Release  
Half Flush Cycle Time: 8 secs  
Flush Flush Activate: Press - Hold 1 sec+  
Full Flush Cycle Time: 12 secs

Receiver/Battery Box: 2.75W x 2.0D x 3.75H inches (70 x 51 x 95 mm)  
Power: 6x AA 1.5V Alkaline Batteries  
Battery Life: 6 Months or 5,000 Flushes (Average)  
Actuator Motor: Servo Jackscrew