

FaucetMinder Automatic Hands Free Touchless Faucet Sensor

This general instruction sheet covers the basic installation procedure for this kit. Since faucet fixtures vary widely, your particular installation may require additional steps, adapters and/or hardware. For more information, please visit our website at <http://www.water-saver.org> or email your questions to support@water-saver.org.



Water Saver Products, LLC

"Home of the FlushSaver DIY Kits"

♦♦♦ FCTMNDR Rev A © WSP 2019

Thank You for choosing Water Saver Products !!!

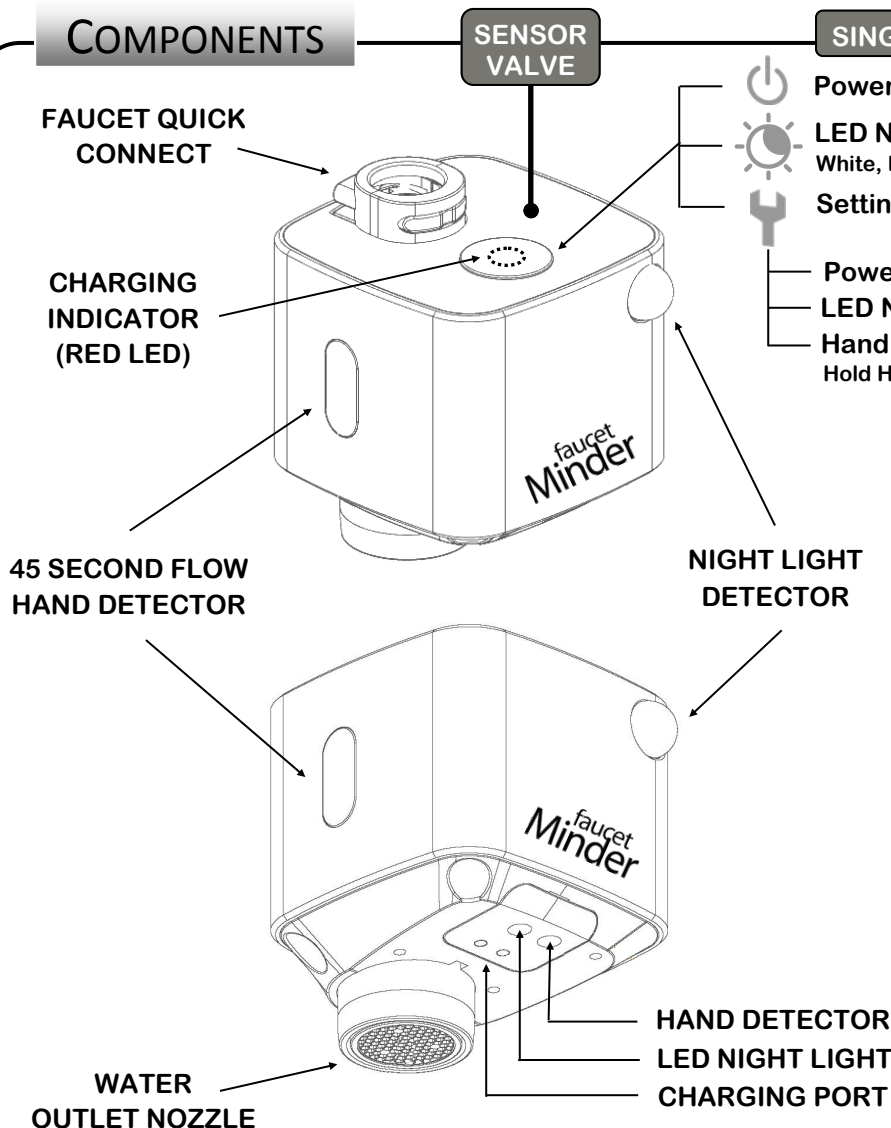
OVERVIEW

This electronic faucet sensor fits most standard kitchen or bathroom faucets and is **FULLY AUTOMATIC**. By simply placing your hands under the faucet, the water turns on. Then remove your hands and the water turns back off . . . just like the faucets seen in commercial buildings. For a longer period of water flow, wave your hand over the side sensor and the water will stay on for up to 45 seconds or until you wave over the sensor again. It also includes an auto-detecting color night light for ease in locating the faucet in the dark as you approach the sink. Choose from one of 7 different night light colors to best match your decor or preference: white, blue, red, green, purple, yellow, or blue-green. Plus, the FaucetMinder is rechargeable with a magnetic USB charge cord . . . **NO BATTERIES TO REPLACE**.

PREPARATION

Before attempting installation, please read these Quick Start Instructions thoroughly and familiarize yourself with your specific faucet configuration. In most cases, **NO TOOLS** are required and the existing faucet spout or aerator can be removed by hand or with the included wrench. However, some faucets may require special tools or adapters beyond what is included with this kit, so gather any special tools or adapters prior to starting the installation. Also test fit the FaucetMinder unit up against the faucet spout area to ensure it will have enough clearance on all sides for proper operation.

COMPONENTS



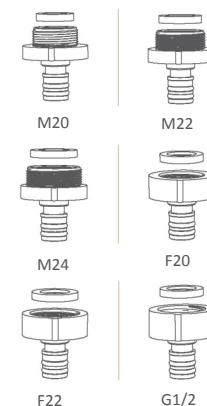
SINGLE BUTTON SETUP

- Power On - Press & Hold 3 Seconds**
- LED Night Light Color - Press at 2 Second Intervals**
White, Blue, Red, Green, Purple, Yellow, Blue-Green
- Settings Mode - Press & Hold Until LED Blinks White**
Repeat Press to Select LED Color
- Power Off - Red then Blinks to Confirm Off**
- LED Night Light On or Off - Green then Blinks**
- Hand Detection Range - Purple turns Blue & Blinks**
Hold Hand Under Detector at Desired Range Until LED Turns Off

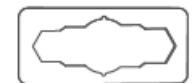
ACCESSORIES

(Objects not to relative scale for clarity)

FAUCET ADAPTERS



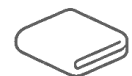
FAUCET NOZZLE WRENCH



MAGNETIC USB CHARGE CABLE



LENS CLOTH



M = Male Thread F = Female Thread
Number = Thread Size (millimeters)

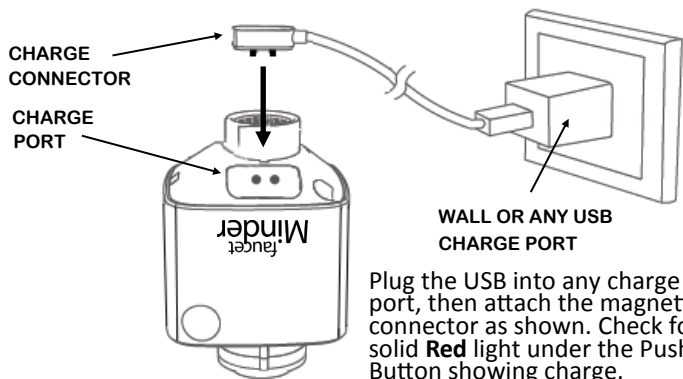
INSTALLATION (over)



CHARGING

Prior to operation, fully charge the Sensor Valve by attaching the magnetic Charge Connector to the Charge Port at the bottom of the unit near the Water Outlet Nozzle as shown.

1



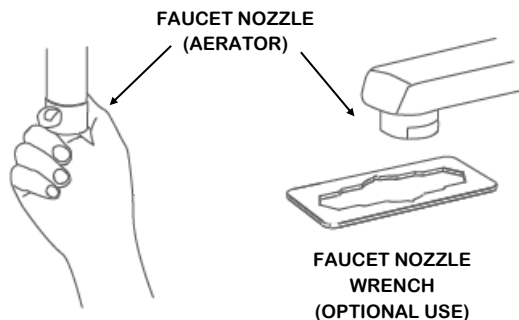
Plug the USB into any charge port, then attach the magnetic connector as shown. Check for a solid **Red** light under the Push Button showing charge.

⇒ FULL CHARGE COMPLETES IN APPROXIMATELY 4 HOURS

INSTALLATION

Remove the existing faucet nozzle or aerator by hand or with the included Faucet Nozzle Wrench as required. Also remove any existing washer, o-ring gasket or filter screen.

2



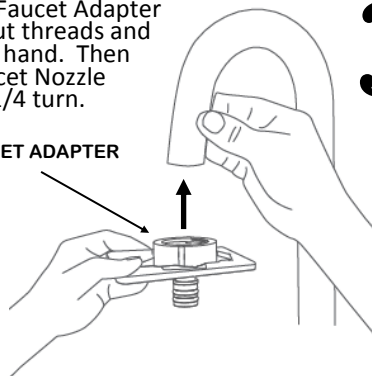
⇒ FEEL OR LOOK UP INSIDE THE FAUCET SPOUT TO ENSURE THAT ANY WASHER, O-RING GASKET OR FILTER SCREEN IS REMOVED

Select the appropriate Faucet Adapter that fits the faucet spout threads and carefully screw it on by hand. Then snug it up with the Faucet Nozzle Wrench another 1/8 - 1/4 turn.

3

FAUCET ADAPTER

DO NOT OVERTIGHTEN
IT'S ONLY PLASTIC



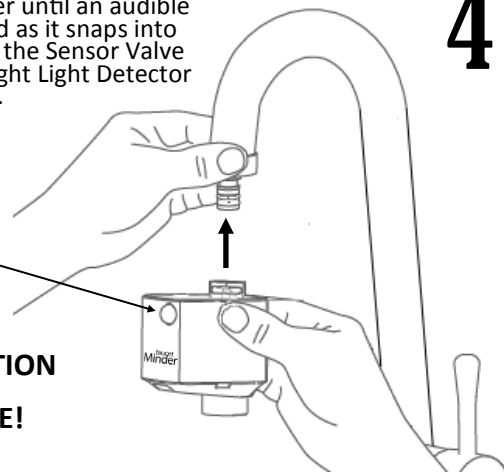
NOTE: The included adapters fit most standard sink or kitchen faucets. They DO NOT FIT designer faucets with nozzles that are square, oval or with round threads larger than 24mm. Non-standard adapters NOT INCLUDED !!!

Fit the Sensor Valve up onto the Faucet Adapter until an audible "click" is heard as it snaps into place. Rotate the Sensor Valve so that the Night Light Detector faces forward.

4

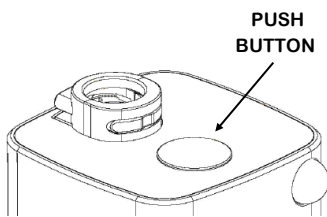
NIGHT LIGHT DETECTOR

INSTALLATION COMPLETE!



SETTINGS

5



Power and Settings are controlled by the single Push Button on the Top.

POWER ON

Press & Hold for 3 Seconds

SETTINGS MODE

Press Until LED blinks **White**

Then Press Repeatedly to Cycle Through the 3 Setting Options Indicated by the LED **Color**. Release the Button to Activate.

POWER OFF Select **Red** LED, Release Button, LED Blinks then Off

DETECTION RANGE Select **Purple** LED, Turns **Blue** when Ready Hold Hand Under Detector at Desired Range Until LED Turns Off

LED NIGHT LIGHT ON/OFF Select **Green** LED, Release Button

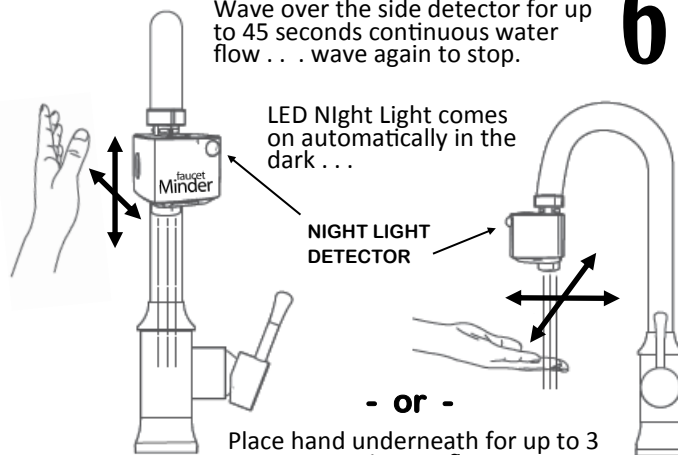
LED NIGHT LIGHT COLOR Press Button at 2 Second Intervals to Cycle Colors (NOT in Settings Mode)

Choose From 7 Colors: White, Blue, Red, Green, Purple, Yellow, Blue-Green

OPERATION

6

Wave over the side detector for up to 45 seconds continuous water flow . . . wave again to stop.



- or -
Place hand underneath for up to 3 minutes continuous flow . . . remove and repeat to restart flow.

SPECIFICATIONS

Sensor: 2.30Wx2.12Dx3.03H inches (58x55x77 mm)
Housing Material: Aluminum Alloy Anodized
Water Flow: 5.3 - 6.3 quarts/min (5 - 6 liters min)
Sensors Type: Infrared Thermal Detection

Power: 3.7V DC 140 mAh
Type: Rechargeable Lithium Ion
Charging Time: 4 Hours Full Charge
Operating Time: Up to 180 Days (Avg Use)

Water Pressure: 8 - 100 PSI Max
Water Temp: 34 - 130 F (1 - 55 C) Max
Safety Auto Flow Stop: 3 Minutes Continuous
Moisture Protection: Silicone Gasket Sealed