

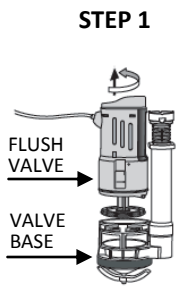
QUICK START Dual Flush Kit and Fill Valve Instructions — Thank You for choosing Water Saver Products !!!

To conserve paper and for those who do not have fast internet access, we are including this general instruction sheet which covers the basic installation procedure for this kit. For **Detailed Instructions, Pictures and Videos** online, please visit our website at <http://www.water-saver.org> or email your questions to support@water-saver.org.

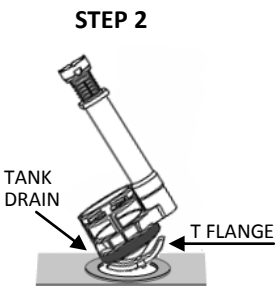
PART ONE: TANK PREPARATION . . . How to drain the water and ready for installation on a standard ONE-PIECE toilet

Place towels underneath the tank on both sides to catch any water that drips down during parts removal. Shut off and then disconnect the water supply to the tank fill valve if it is being replaced. Otherwise, leave the water supply connection in place. Flush the toilet and hold the handle down to allow as much water to drain out as possible. Now use a sponge to soak up the remaining water until the tank is completely empty. Remove the existing flapper or column valve from inside the tank. These are usually held in place by a T Flange as shown in Part Two Step 2. Then remove the nuts from the fill valve (if replacing) and flush handle or push button mechanism. Save ALL parts for now in case any need to be reused. Clean the tank thoroughly to ready for the new parts.

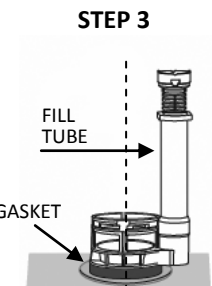
PART TWO: DUAL FLUSH VALVE INSTALLATION . . . How to install the dual flush valve in the toilet tank



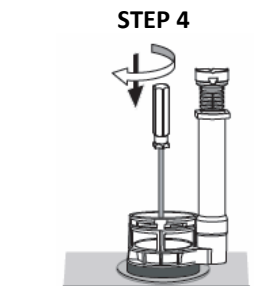
STEP 1
Separate the dual flush valve from its base by rotating the flush valve until its retaining tabs align and it pulls free.



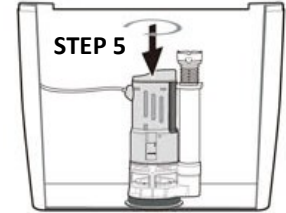
STEP 2
Loosen the T Flange and angle the valve base enough to slide the T Flange into place underneath the drain.



STEP 3
Center the valve base gasket in the tank drain and rotate the base until the fill tube is at about the 2 o'clock position.



STEP 4
Now tighten the T Flange retaining screw from above until the gasket just starts to bulge. **DO NOT OVERTIGHTEN!**



STEP 5
Reconnect the flush valve back into the base by aligning its retaining tabs. Then rotate the flush valve to lock and position it such that the cable has a nice wide bend over to the flush handle or push button mechanism.

PLEASE NOTE

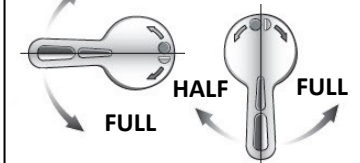
After **PART THREE**, skip to **PART FIVE** if NOT installing the FillerSaver tank fill valve. Otherwise continue to **PART FOUR** for further installation instructions.



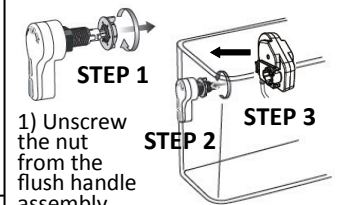
Water Saver Products, LLC

◆◆◆ LVCPQSQ Rev A © WSP 2014 ◆◆◆

PART THREE: FLUSH HANDLE INSTALLATION



The flush handle can be oriented for either traditional up/down or left/right flushes as preferred.



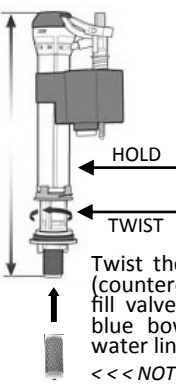
STEP 1
1) Unscrew the nut from the flush handle assembly.

STEP 2
2) Insert the handle shaft through the tank such that the handle is in the desired orientation, then reinstall and snug down the nut.

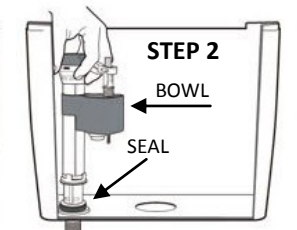
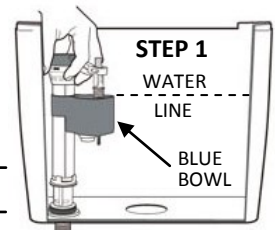
STEP 3
3) Attach the cable box by pressing the blue release button and aligning it to the flush handle shaft.

PART FOUR: FILL VALVE INSTALLATION . . . How to install the fill valve in the toilet tank

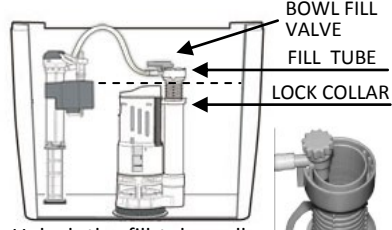
INSTALL TIPS



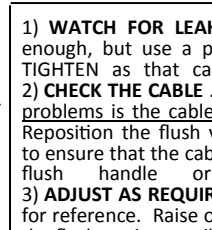
STEP 1
Twist the lower portion to the left (counterclockwise) and extend the fill valve base until the top of the blue bowl aligns with the factory water line in the tank. Twist back.
<<< NOTE SEDIMENT FILTER INSIDE



STEP 2
Position the fill valve with the bowl at about the 4 o'clock position or best angle for fit. Thread the washer and nut back on, press down on the valve and hand tighten the nut.



Unlock the fill tube collar and extend to about 1/2" above the water line, then relock. Attach the bowl fill valve to the top of the fill tube and adjust to about midway between open and closed. This little valve can save up to an extra gallon on each flush.



LOCK COLLAR
BOWL FILL VALVE
FILL TUBE

- 1) WATCH FOR LEAKS . . .** hand tightening is usually enough, but use a pliers if required. **DO NOT OVERTIGHTEN** as that can also cause leaks or breakage.
- 2) CHECK THE CABLE . . .** the most common cause of flush problems is the cable not being routed loosely enough. Reposition the flush valve and/or cable box orientation to ensure that the cable has a nice wide bend over to the flush handle or push button mechanism.
- 3) ADJUST AS REQUIRED . . .** the factory water line is just for reference. Raise or lower the water level and change the flush settings until both flushes work as desired. Most toilet flapper valves use much more water than required.
- 4) CHECK THE FILTER . . .** if the filling time begins to increase over time, check the fill valve filter (Part Four).
- 5) DON'T PANIC !!! . . .** these kits work extremely well in most standard toilets and we can help figure out any problems. See the help and contact info above.

PART FIVE: FINAL ADJUSTMENTS . . . How to set up everything up for the first flush

FIRST FLUSH !!!

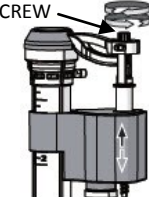
HALF FLUSH
Start with the half flush slide adjustment (BLUE) all the way UP for the least water.



FULL FLUSH
Start with the full flush slide adjustment (RED) at about the HALF WAY point.



FIRST TANK FILL
Reconnect the water line to the fill valve and turn the water on just enough to slowly fill the tank. Watch for any leaks and as the tank fills, it may settle, so snug up the tank bolts again as required. Fine tune the fill valve thumb screw to adjust the fill level to the water line.



Try a few half flushes first and increase the half flush setting and the bowl fill valve until the flush volume and bowl refill are satisfactory with the least amount of water used. Then try a few full flushes and adjust the full flush setting until satisfactory. Note that the full flush can usually be set to reduce water use as well. **HAPPY FLUSHING!**